

2400 ACR (Cable Retriever)

Illustrated Parts List

Revision: January 2021



Contact Information

<https://itwgse.com/service-and-support/>

Europe, Middle East & Asia Pacific

ITW GSE ApS. Denmark
Tel: (+45) 63 18 60 00
Mail: support@itwgse.com

Americas

ITW GSE Inc. USA
Tel: (+1) 941 721 1000
Mail: support@itwgse.us

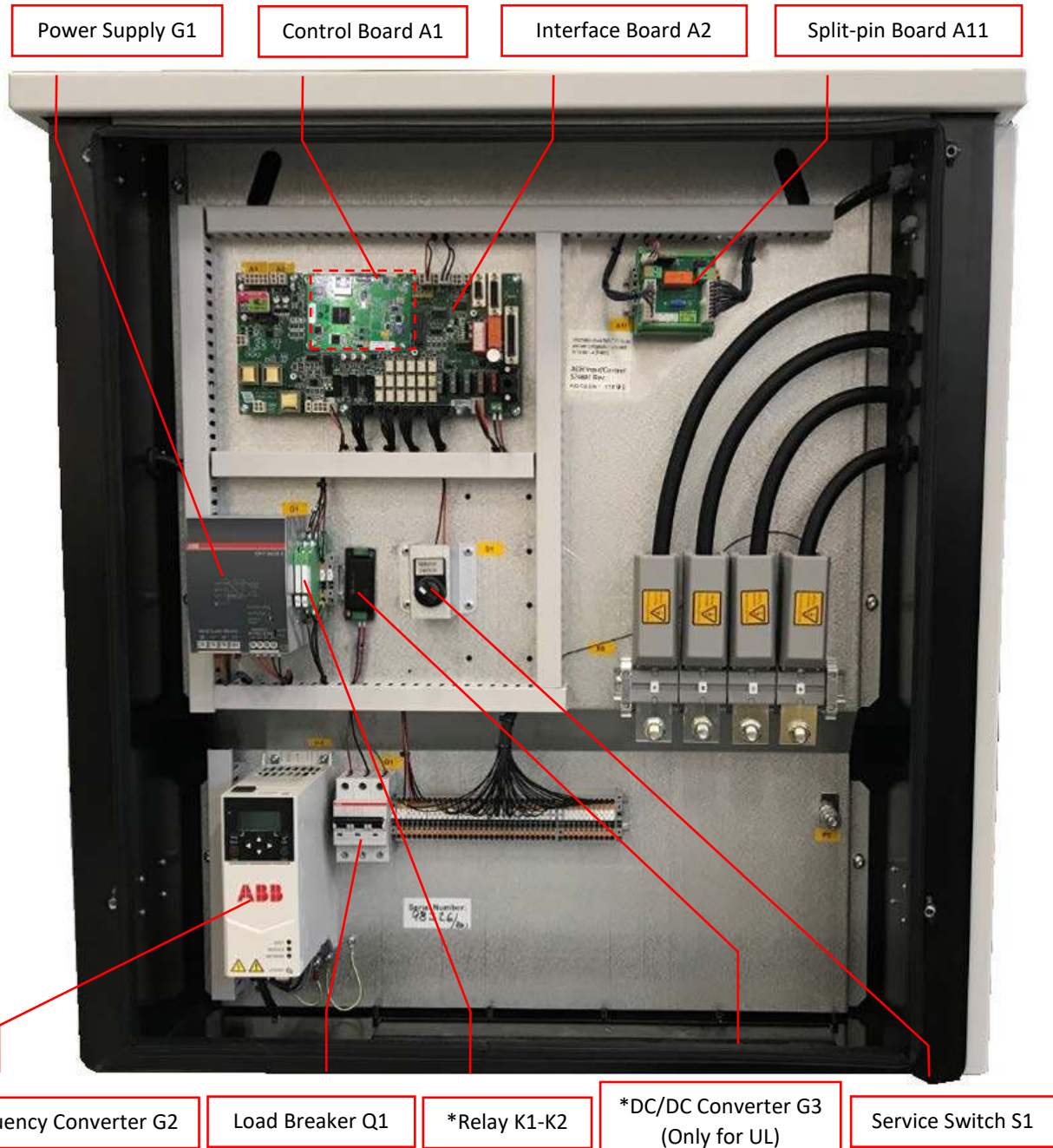


Figure 1: Input Side Internal Components

*Note: This part number differs for UL and CE configuration. Check manual or contact ITW GSE support.
Note: Please refer to last pages for part numbers

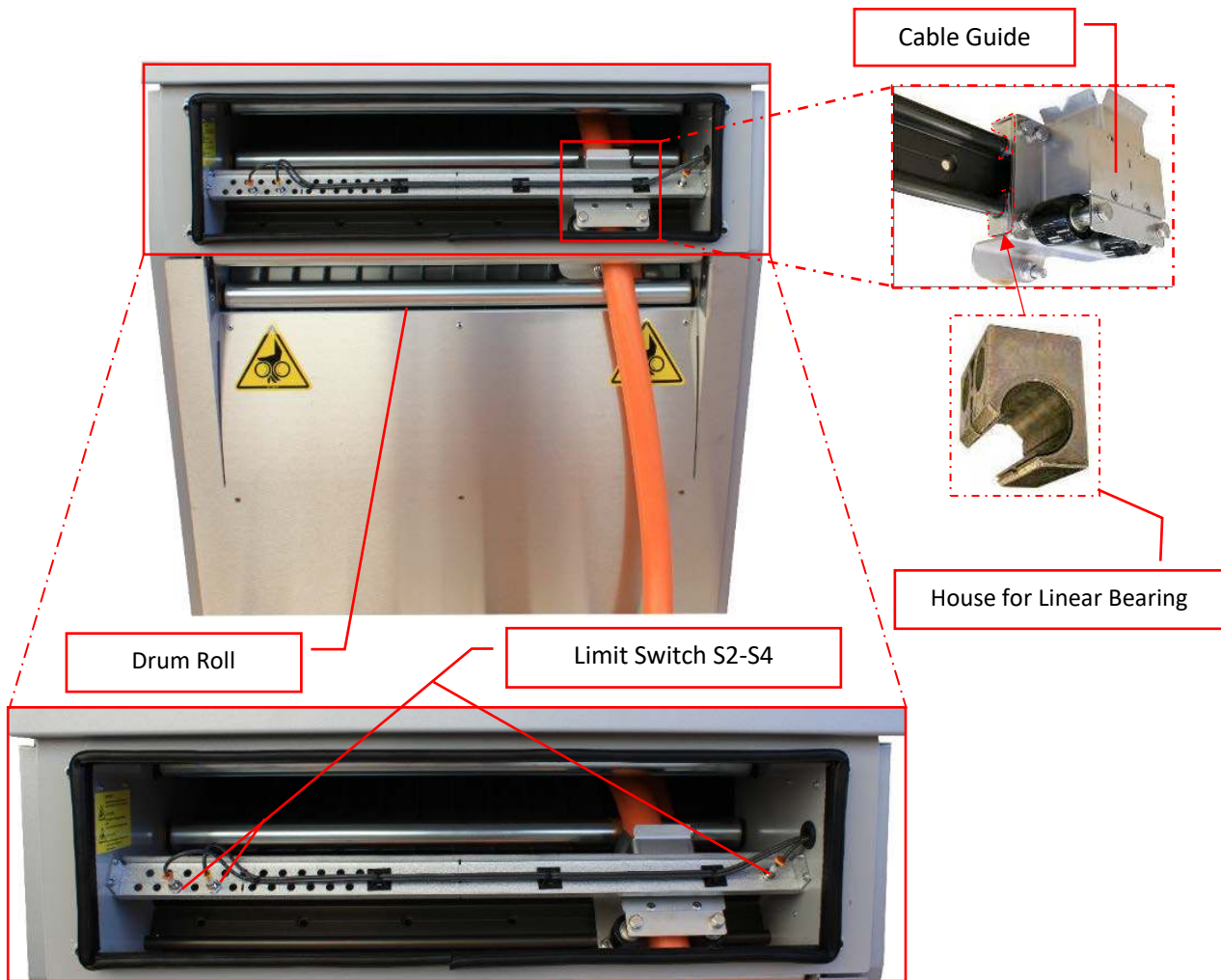


Figure 2: Output Side Cable Guide

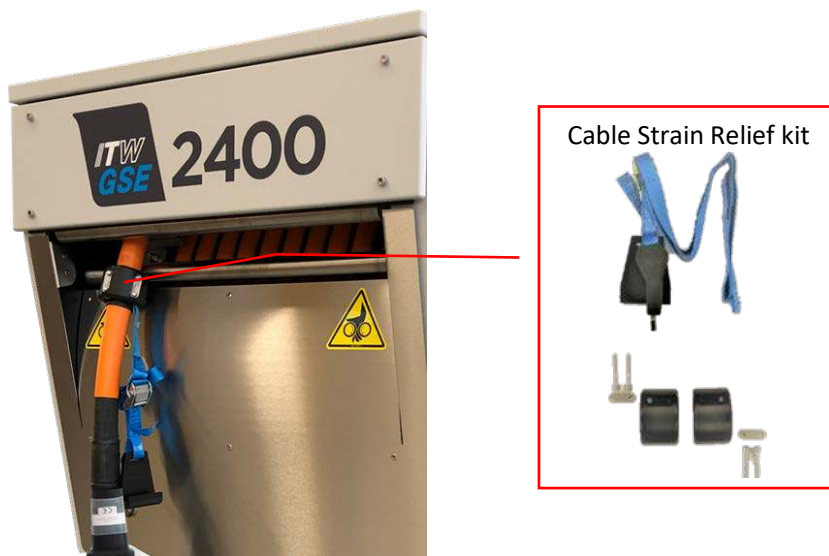


Figure 3: Output Side

*Note: This part number differs for UL and CE configuration. Check manual or contact ITW GSE support.
Note: Please refer to last pages for part numbers

*Flexible Power & Contr. Cables

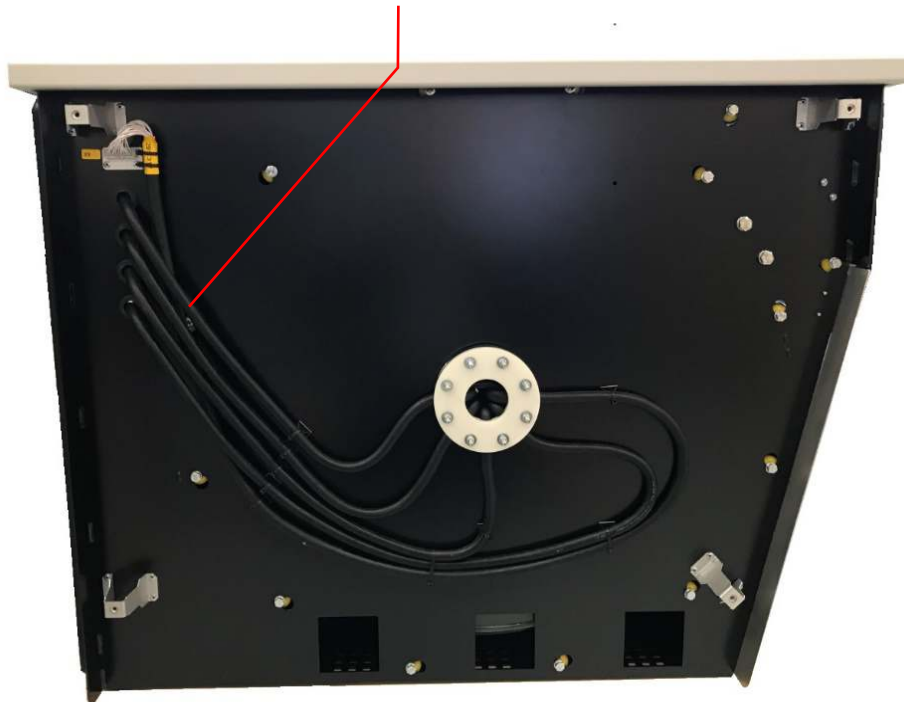


Figure 4: Left Side Internal Components

*Worm-gear Motor M5

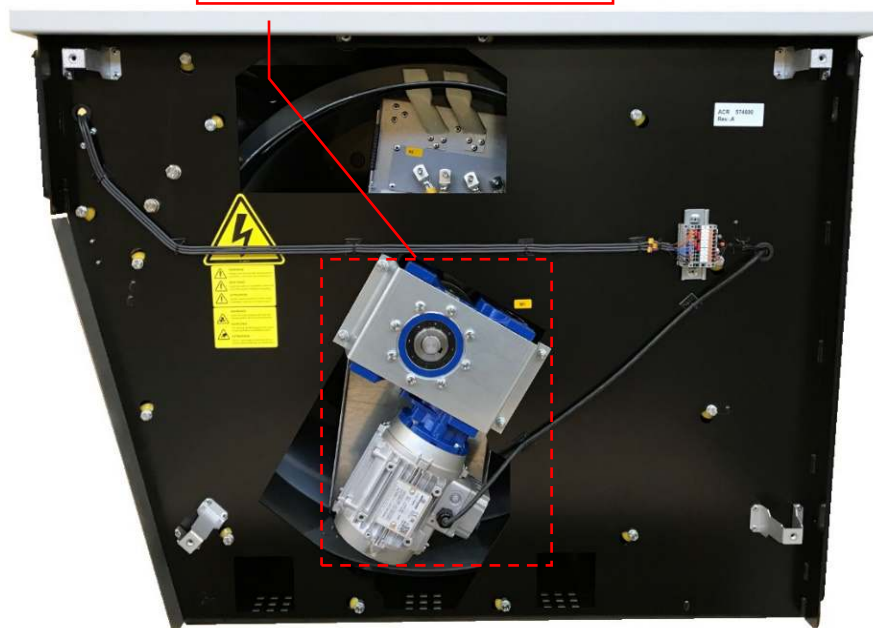


Figure 5: Right Side Internal Components

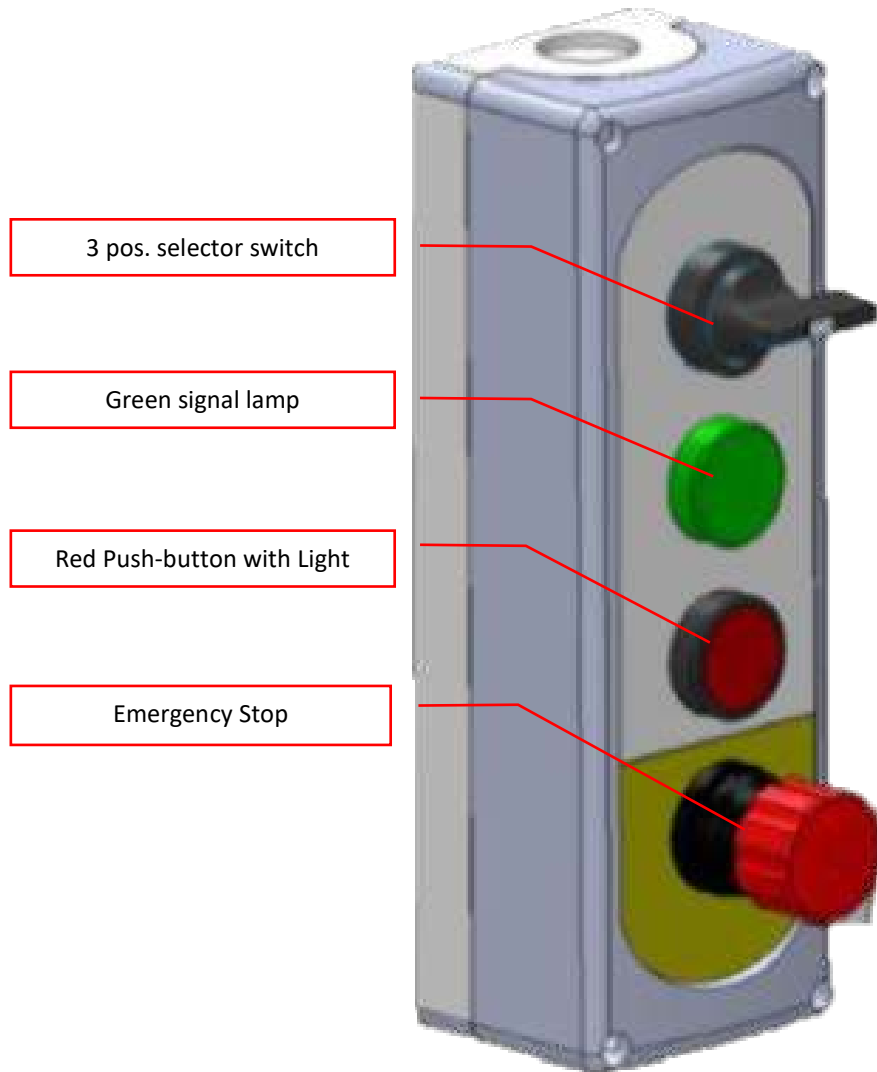


Figure 6: ACR Remote Control Box Optional

Comp. No.	Part No.	Description	Data
A1	579526	GSE Control Board	
A2	579527	Interface Board	
A11	579549	Split-pin board	
F1-3 A2	SI2066	ATO fuse	10 A
F4 A2	SI2075	ATO fuse	5 A
F5 A2	SI2076	ATO fuse	2 A
G1	PS0010	DC Power Supply	24 VDC, 10.0 A
G2	AE0103	Frequency Converter	3x400/480 V, 1.5 kW
*G3	AE0076	DC-DC Converter (Only UL)	
*K1	RE4421	Relay Module CE	24 V, 1 Contact
*K1	RE4423	Relay Module UL	24 V, 2 Contacts
K2	RE4421	Relay Module	24 V, 1 Contact
M3	GM0002	Worm-gear Motor CE	1,1 kW 080 1500 Rpm
M3	GM0003	Worm-gear Motor UL	1,1 kW 080 1500 Rpm
Q1	DP0222	Circuit Breaker	6 A / 3 Pol
S1	594037	2 pos. Selector Switch Kit	
S2-S4	AF0501	Limit Switch	
Figure 2	577124	Cable Guide Assembly	
Figure 2	AM0201	House for Linear Bearing	
Figure 2	AM0085	Drum Roll	
Figure 3	574222	Cable Strain Relief Kit	
*Figure 4	291317	Flexible Power & Contr. Cables	With cable drum temp. UL
*Figure 4	291317	Flexible Power & Contr. Cables	Without cable drum temp. CE
Figure 6	594046	3 Pos. Selector Switch Kit	Option Diagram S2
Figure 6	594038	Red Push-button w/Light	Option Diagram S4
Figure 6	594026	Green Signal Lamp	Option Diagram H1
Figure 6	AF0403	Emergency Stop, Compact	Option Diagram S1

*Note: This part number differs for UL and CE configuration. Check manual or contact ITW GSE support.