

## Replacement of 2400 NCR Board - P/N 579531

(Please refer to front view of the GPU to locate the NCR Board)

1

Switch off the converter and wait 5 minutes before you remove any covers / panels to replace the NCR Board.



### Warning!

Capacitors remain charged to dangerous voltages.  
Discharge time: 5 minutes



### Notice!

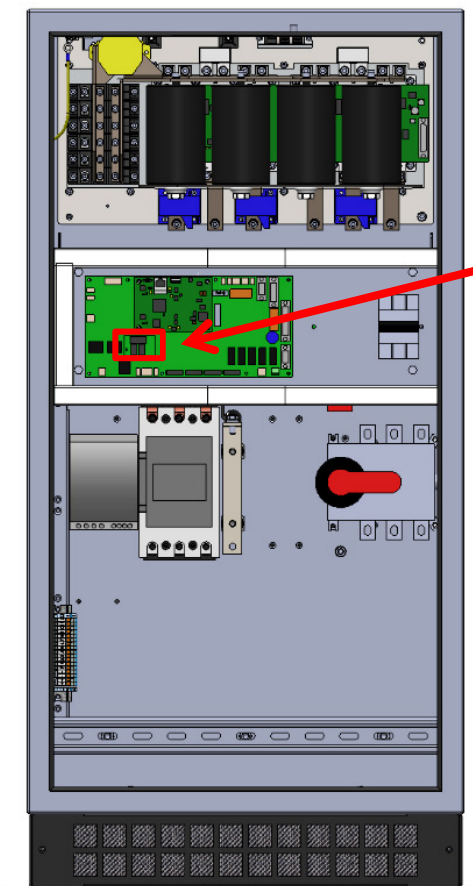
To prevent PCB damage from electrostatic discharge, wear ESD wrist strap when servicing.

To access the NCR Board, please remove the protective cover, located behind the front door.

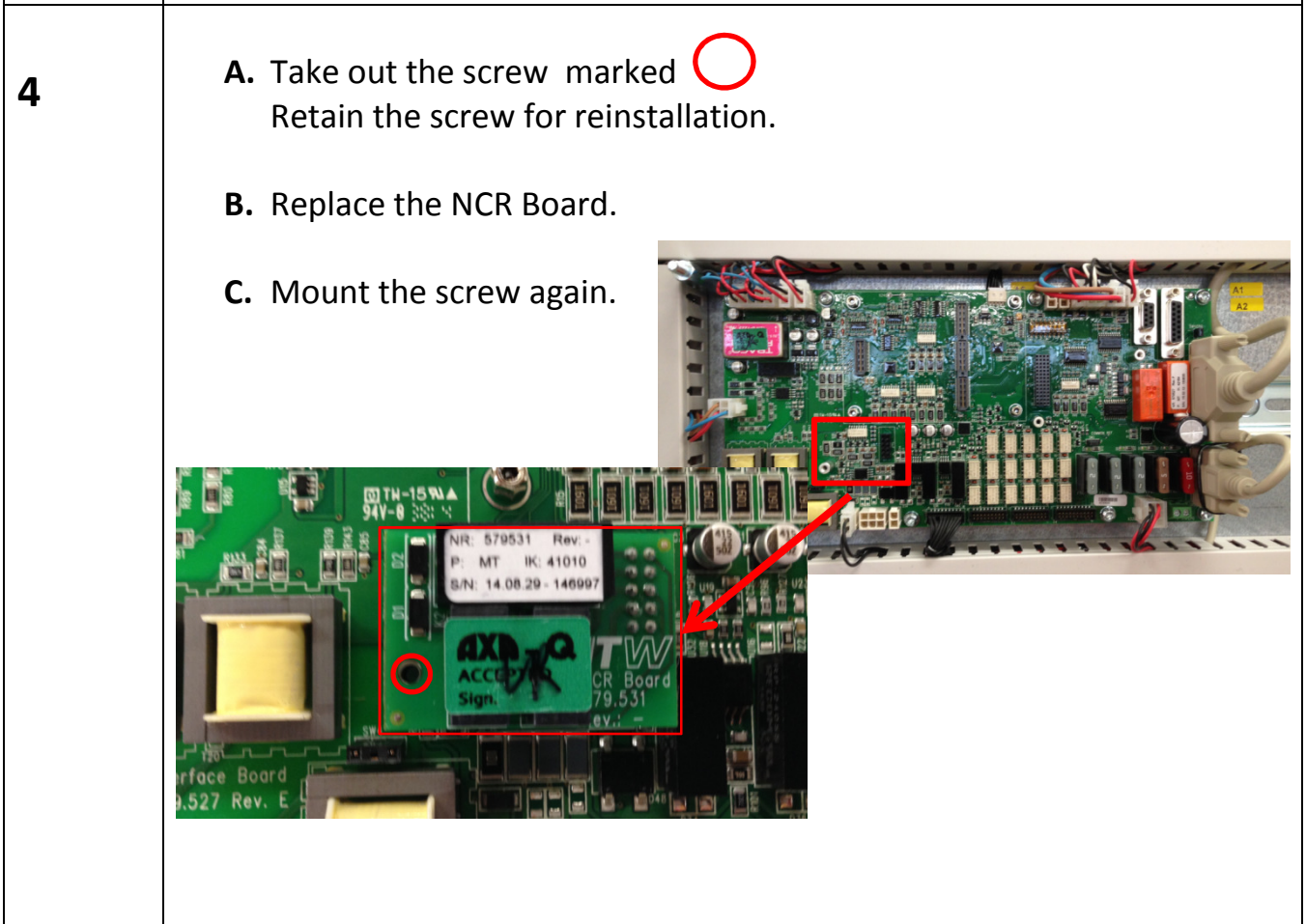
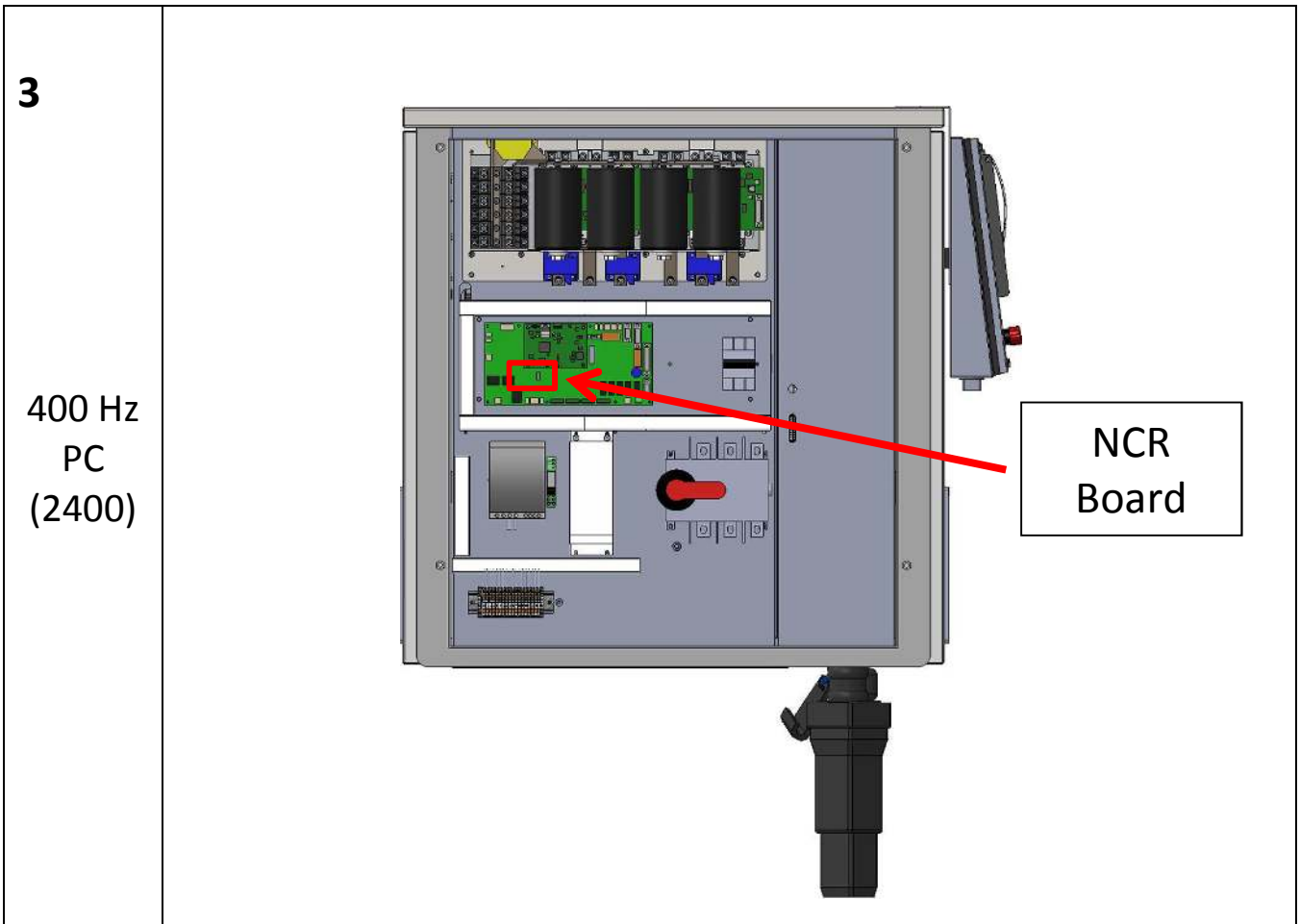
2


Location of the NCR Board (on Interface Board) marked with 

400 Hz  
GPU  
(2400)



NCR  
Board



5	Install the protective cover.
6	Switch on the converter and close front door.
7	<p>Display should now show “Ready to use”</p>  <p><b>Note!</b> Display screen may vary depending on configuration.</p>
8	Start the unit and it should now be running without error messages.
9	<p>During operation of the converter, remove the Z wire return to Output 1 from the plug (terminal block X1: 5) and observe the unit trip and report “NEUTRAL CONDUCTOR RUPTURE OUTPUT 1” Insert z wire again and reset the unit.</p> <p><b>Note!</b> Repeat the above if the unit is equipped with second output. Z wire (terminal block X2: 5)</p> <p>If Z1 &amp; Z2 wires are removed at the same time the GPU reports “F1 or F2 Fuse Blown”.</p>
10	The unit is now ready for operation again.